



- MP Series
- LC Series
- SL Series
- KR Series



- RT Series
- RS Series
- BR Series
- RD Series
- AC & DC Motors



- Couplings
- Torque Limiters



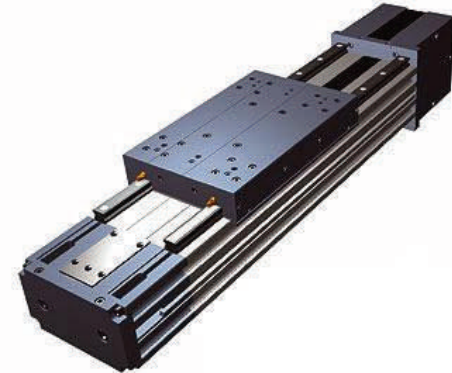
- Linear Actuators
- Linear Screw Jacks
- Linear Slides



12610 Galveston Road
Webster (Houston), TX 77598
Tel: (281) 480-8711
Fax: (281) 480-8656

Visit our website at:
www.sipco-mls.com

DISTRIBUTED BY



ROBOT Series





ROBOT SERIES



SIPCO offers a complete product line of standard and precision components.

SIPCO has been satisfying customers since 1984. In that time, we have established a reputation for providing product services & Mechanical Linkage solutions to industries using motion control, power transmission, and hydraulic systems. Today, our products are in applications, including robotic, packaging, automotive, printing and material handling applications to name a few. Through this experience, we are continually evolving, offering new innovative solutions for high-tech applications. When you have one source, you only have to place one order to fill your Mechanical Linkage needs.

The ROBOT series is the offshoot of attentive design that, integrating the production of fully-consolidated linear motion units, is intended to cater to particularly harsh applications as regards load, rigidity and accelerations.

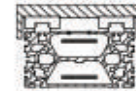
With this extension of the range, it is possible to implement systems with multi-axis self-supporting elements with static, dynamic and mechanical characteristics able to reduce both overall dimensions and the various types of machining carried out entirely by the user previously.

The ROBOT series can be used in a wide range of different applications;:

Two or three axis manipulation, palletisation, traverse of high loads on two parallel axis, push, pull of high weights, harsh work cycles.

ROBOT 100

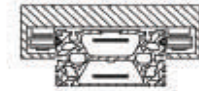
With ball bearing guides



ROBOT 100 SP

Body dimensions 55x100mm

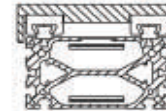
With lancet arch bearing



ROBOT 100 CE

ROBOT 130

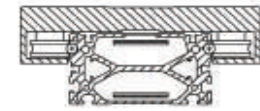
With ball bearing guides



ROBOT 130 SP

Body dimensions 55x100mm

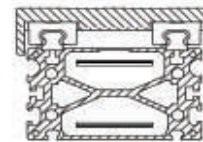
With lancet arch bearing



ROBOT 130 CE

ROBOT 160

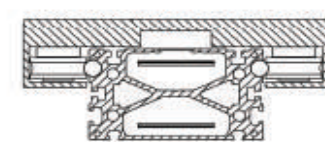
With ball bearing guides



ROBOT 160 SP

Body dimensions 55x100mm

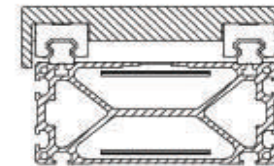
With lancet arch bearing



ROBOT 160 CE

ROBOT 220

With ball bearing guides



ROBOT 220 SP

Body dimensions 55x100mm

